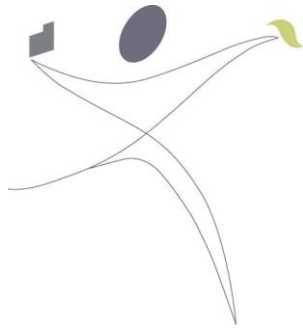


News and Views

An occasional newsletter prepared by:
ALL ABOUT PLANNING PTY LTD
 Corporate Members Planning Institute of Australia
 Certified Practising Planners



**ALL ABOUT
 PLANNING**

PO BOX 2196
 PORT MACQUARIE
 NSW 2444
 PH 02 6583 1305
 FAX 02 6583 1368

CPP
 CERTIFIED PRACTISING PLANNER

PIA Planning
 Institute
 Australia
 Consultant Planners



Edition No. 8

2010 will see All About Planning operating for 8 years in Port Macquarie, the Hastings and Mid North Coast.

Thank you for your ongoing commitment and support and we appreciate your continued recommendation of our business to others.

Exhibition of Draft Planning Documents

These are very important planning documents and **AAP** recommends you review the draft provisions relevant to your areas of interest.

Draft DCP 2010

The new draft DCP 2010 has been on display at Council since 8th March.

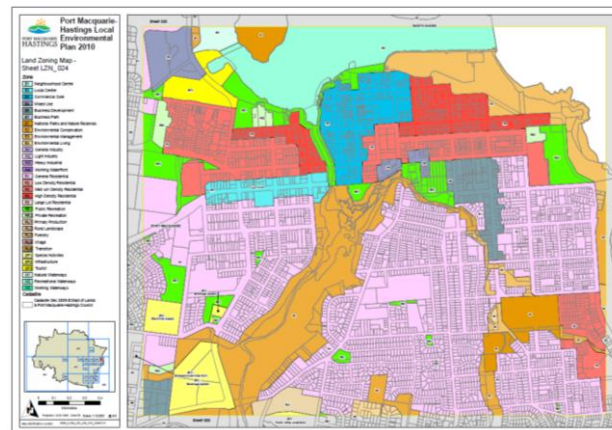
The final date for lodgement of any submissions on the exhibited new draft DCP 2010 with Port Macquarie-Hastings Council is Friday, May 7th, 2010.



Draft LEP 2010

The new draft LEP 2010 has also now been on display at Council since 8th March.

The final date for any submissions to Port Macquarie-Hastings Council on the exhibited new draft LEP 2010 is Friday, May 7th, 2010.



Draft LEP CBD Zoning Map for Port Macquarie

Please feel free to contact AAP or alternatively contact Council direct if you require additional information about either the LEP or DCP exhibited documents.

These are important planning controls for the Hastings area and persons with property and business interests would be wise to review Council's proposals.

Foreshore Plan of Management

The NSW Department of Lands is currently inviting comments on a Draft Plan of Management for Crown Land at Port Macquarie between Settlement Point and Town Beach, including the Hastings River. The Plan is on exhibition until Friday, 23 April 2010 and can be viewed on the NSW Department of Lands website.



Image: Plan Area sourced from NSW Department of Lands Website

In the Media

Australia's Population Explosion

The Federal Government has just released a report which discusses population growth in Australia.



Below are some interesting facts about Australia's projected population to 2050:

Australia's population is projected to grow from around 22 million people currently to 35.9 million people in 2050.

Population ageing is projected to continue. The number of children is projected to increase by 45% and the number of prime working-age people is projected to increase by 44% between 2010 and 2050.

This is expected to occur at the same time as the number of older people (65 to 84 years) **more than doubles**, and the number of very old (85 and over) **more than quadruples**.

While there is positive growth in the size of all age groups and growth in the size of the labour force, the working-age ratios are projected to fall at the same time as the aged dependency and child dependency ratios rise.

In 1970, there were 7.5 people of working age to support every person aged 65 & over.

In 2010 this has fallen to an estimated 5 people of working age for every person aged 65 & over.

By 2050 the number is projected to decline to 2.7 people of working age to support every person aged 65 & over.

Source: The 2010 Intergenerational report, Federal Treasury, Australian Government

Also interesting to note is that the Federal Government has recently appointed a Population Minister who has the task of reporting back on population matters within 12 months.

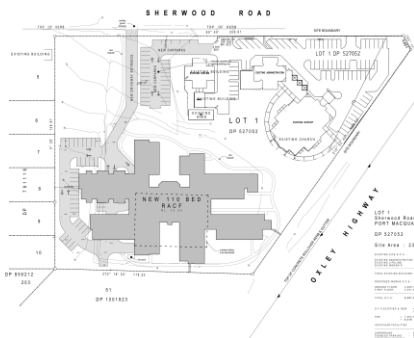
Population change is a real challenge for future planning.

Recent Planning Work

Port Macquarie Aged Care Facility

Peter & Michelle Chapman were pleased to witness the recent ground breaking of the new Uniting Care Ageing-North Coast Region Aged Care Facility which is being built next to the Uniting Church on the Oxley Highway.

AAP were the Planning Consultants for this project which was approved by Council in 2008.



Left: Site layout of the new Aged Care Facility in Port Macquarie (Merrin & Cranston Architects)

Partridge Creek Part 5 REF

AAP completed a Part 5 Review of Environmental Factors for the Oxley Highway Upgrade, Partridge Creek for NSW RTA.



Photo: Locality Plan showing extent of proposed works

Continuing Professional Development

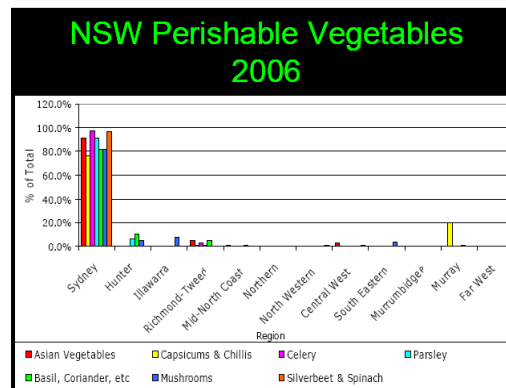
Food for Thought

If you are a farmer you may be surprised to hear it, but PLANNING for food security is currently a hot topic of conversation! Michelle attended a Seminar on Food Security in Kempsey in March 2010 which highlighted key issues and encouraged town planners to make provision for food security in local planning instruments, protecting agricultural land and supporting



agricultural diversification and rural business growth.

You can see from the following graph how important proximity to key markets is for sale of perishable vegetables in particular.



If we allow our valuable rural land to be taken over for urban growth, where are we going to produce fresh food for our growing population in the years to come?

It would be great to see the Mid North Coast's share of the vegetable, egg and flower production grow over the coming years and of course other primary industries. To this end we have access to markets, improved transportation routes, a growing population and some established farm production industries.

It's certainly food for thought!

FARMERS MARKETS:

For locals of the Hastings region, you can check out our Farmers Markets and support our region's primary producers!

For more info:

www.hastingsfarmersmarket.com



A note to our valued clients

If you have land holdings and/or property interests in the Port Macquarie-Hastings Council area please remember to check Council's current LEP and DCP proposals relevant to your site.

We love going to our local Farmer's Markets, maybe we will see you at the next one!

Thanks for your support and feedback.

Peter & Michelle Chapman

For enquiries about how All About Planning can assist you, contact Peter or Michelle Chapman, your 100% Certified Practising Planners.

AAP Office: (02) 6583 1305

Peter: 0428 770 049

peter@allaboutplanning.com.au

Michelle: 0419 632 293

michelle@allaboutplanning.com.au