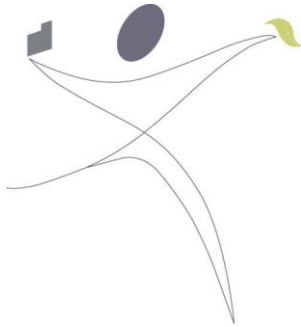


News and Views

An occasional newsletter prepared by:

ALL ABOUT PLANNING PTY LTD

Corporate Members Planning Institute of Australia
Certified Practising Planners



**ALL ABOUT
PLANNING**

PO Box 2196
PORT MACQUARIE
NSW 2444
PH 02 6583 1305
FAX 02 6583 1368

CPP
CERTIFIED PRACTISING PLANNER

PIA Planning
Institute
Australia
Consultant Planners



Edition No. 13 Enjoy the designs featured in this issue!

If anyone is aware of other design innovations Peter and I would be pleased to hear of these and perhaps we may feature them in a future edition of News and Views.

We enjoyed our road trip up the East Coast to Cairns and back via the Gregory's Development Road over the July school holidays. It was interesting to see how different places had invested in their foreshore precincts.

Kind regards, **Peter & Michelle**

FOCUS ON DESIGN

DO YOU KNOW WHAT MAKES A GREAT PLACE?

SOCIABILITY – place has a good feel & lots of interaction
USES & ACTIVITIES – lots of different activities & uses
COMFORT & IMAGE – good looks and a comfortable space
ACCESS & LINKAGES – pedestrian friendly, well connected

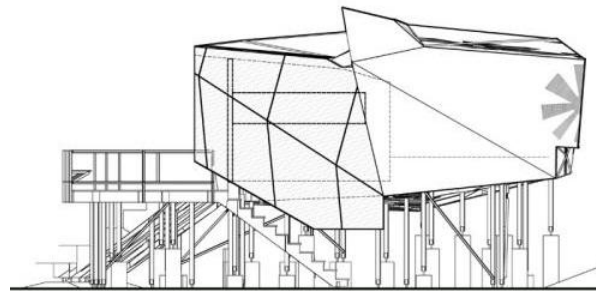


SUNNY FUTURE FOR TOWER IN SYDNEY



One Central Park, Broadway, Sydney - situated on the old brewery site near the UTS. Clever use of a cantilevered mirror structure together with mirrors placed strategically on an adjacent rooftop, will ensure most units in the tall building receive reflected natural sunlight.

NORTH HAVEN AWARD WINNING HOME



Burst *003 Prefabricated House, North Haven

Burst *003 was designed by internationally respected architect Jeremy Edmiston - co-founder of SYSTEMarchitects in New York. This home has been featured in TIME Magazine as INNOVATORS 2005 for the BURST*.003 housing prototype, which is a computer controlled laser cut prefabricated dwelling, with a plywood ribbed structure.

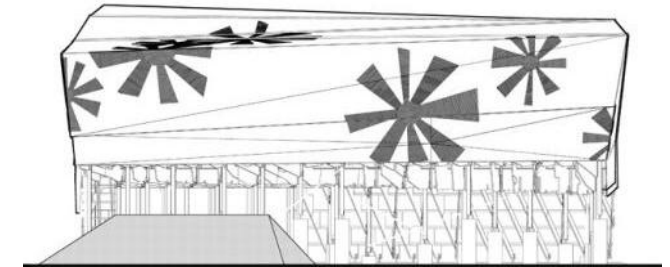


Photo by Floto + Warner

Burst*003, aka Parish House, was designed for a family of five and is sited on a suburban cul-de-sac in North Haven. The house is purposely designed in an understated form and with modest materials to capture the spirit of the traditional Australian beach shack.

The house has no front door or mullioned windows) and is topped off with eye-popping roofing that borrows its pattern from a floral bikini.

Structural joists are designed to store surfboards and bikes and to meet the flood standards required of houses built so close to the water.

Design foresight is not the only way in which Burst*003 responds to its environment. Traditionally, prefabricated structures are built off-site and delivered almost entirely assembled. Advanced CAD systems and a highly efficient milling process for the plywood enabled the team to create a structure with very little waste.

UP AND AWAY - VERY SMALL FOOTPRINT



This Surrey Hill's House is the creation of Dominic Alvaro and his partner Sue Basset. It was recently featured on Grand Designs Australia.

Because Dominic and Sue couldn't afford a house in this Sydney suburb, they bought three car spaces and built it as up as high they could. And the result is an awesome building and a clever design solution.

The tiny corner site is 7m x 6m in dimension and now contains 220m2 of light filled floor space. Prefabricated concrete panels were used in the construction, which made construction fast and efficient. Maneouvring a large crane into place to lift the huge panels and windows into position however, was not easy given the two narrow cross streets.



EAST COAST QLD FORESHORE DESIGN - Beaches, Water Features and Boardwalks Rule



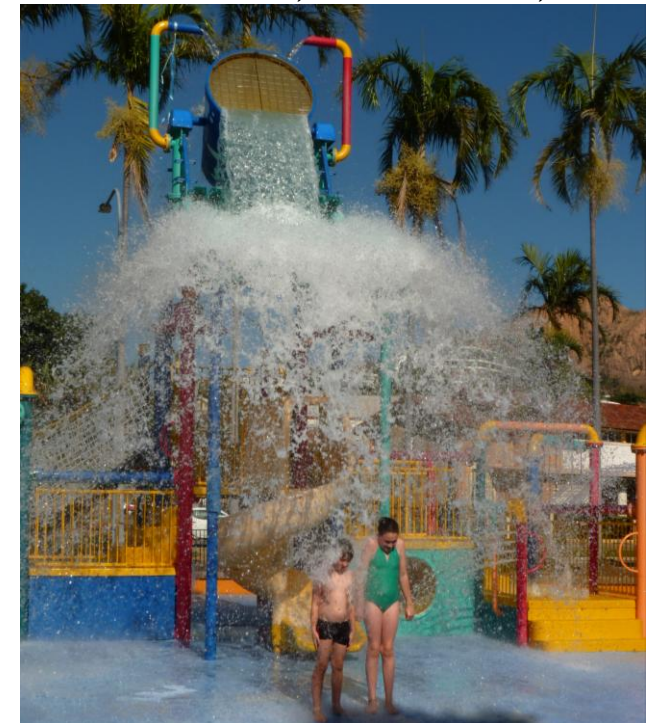
The award winning South Bank Redevelopment, Brisbane



**South Bank Boardwalk & Beach, Brisbane
Peddle Powered Taxi Cabs!**



Waterfront Pool and Beach, with Boardwalk behind, Cairns



The Big Bucket Water Dump, The Strand, Townsville

For enquiries about how All About Planning can assist you,



AAP Office:

Peter:

Michelle:

(02) 6583 1305

0428 770 049

0419 632 293

peter@allaboutplanning.com.au

michelle@allaboutplanning.com.au